

# TOSHIBA

Leading Innovation >>>

# TOSDIC™-CIE

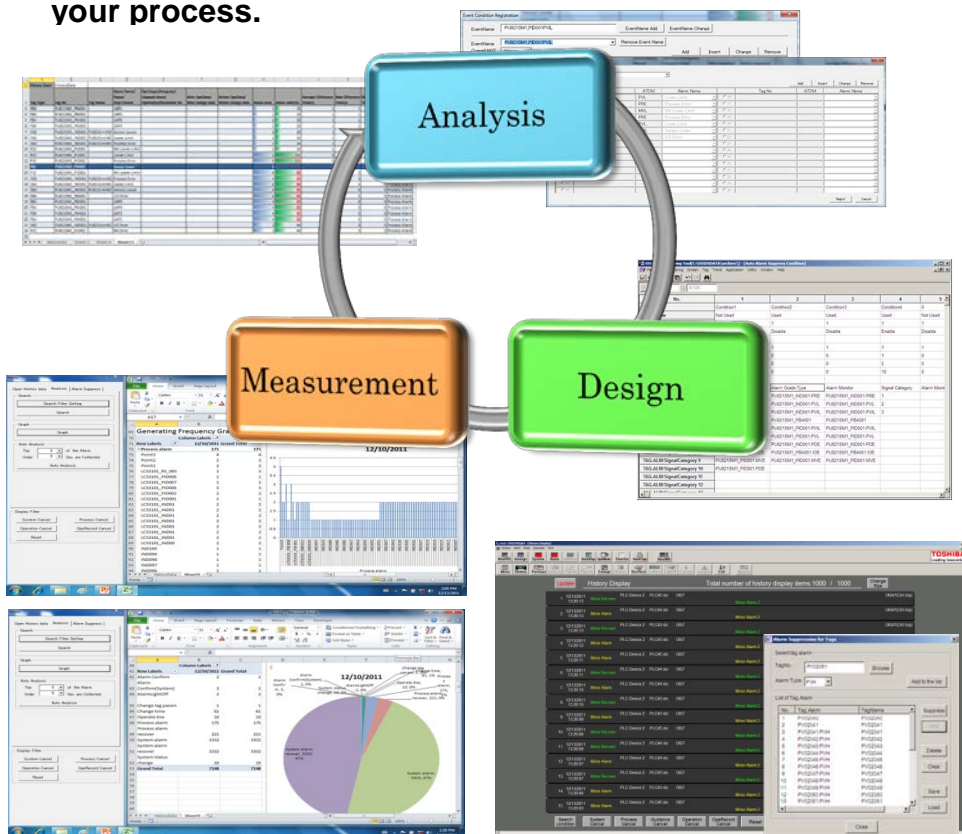
## Alarm Management Package

**Using an alarm management strategy to improve safety and efficiency in your plant operation**

The Alarm Management Package supports analysis of alarms using the historical data from the Operator Interface Stations (OIS).

Operators become confused by mass alarm states and may overlook important alarms and make disastrous operational mistakes. Seeking to avoid such a situation by controlling their alarm loads, our OIS automatically suppresses nuisance alarms in accordance with your setting.

The Alarm Management Package provides a mechanism to develop an effective alarm management strategy for your process.



Toshiba Group contributes to the sustainable future of planet Earth.



## Industrial background

The role of an alarm is to transmit a change of a plant operation state to operators and assist their plant operational activities. On the other hand, a high volume of alarms (alarm flood) generated by failure of plant equipment etc. can mask the actual plant situation. From this point of view, the guidelines and standards of alarm management in process industries, such as EEMUA No.191 (Note1) and ISA 18.2 (Note2), have been published and attention has been drawn to the necessity for proper alarm management under all plant conditions.

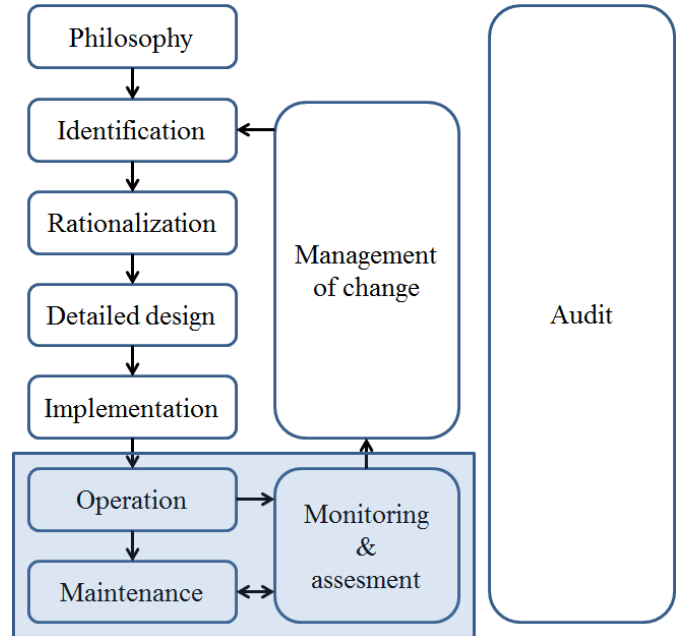
## Target and functions

Shown on the right is the ISA 18.2 alarm management lifecycle, which illustrates circularity of each process. The Alarm Management Package can be used to process the plant operation part shown shaded in the diagram, and helps operators monitor alarms efficiently and effectively on the OIS-DS.

By serving as an important part of alarm management lifecycle, our Alarm Management Package contributes to the implementation of your alarm management strategy.

### ●Suppression by your design

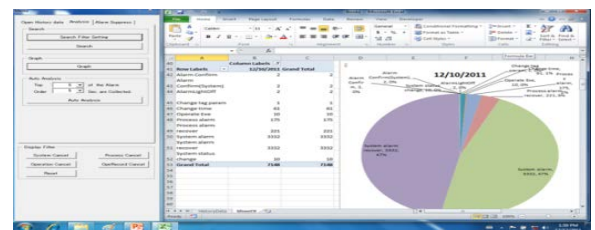
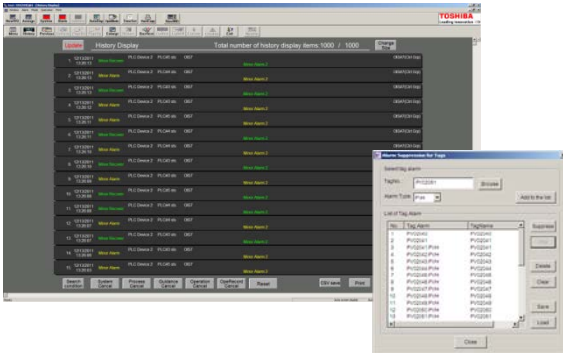
When the plant status is changed such as during startup or shutdown, the thresholds of alarms should change correspondingly. Nuisance alarms often occur in this transition, causing confusion for the operators. To help them catch truly important alarms, the OIS-DS suppression function suppresses nuisance alarms based on your settings of the event conditions.



**Alarm management lifecycle and the target of Alarm Management Package (shaded)**

### ●Analysis support

The software also pin points the relationship among alarms to facilitate your reduction of the total alarms, clarifying the view of the actual plant situation. This Package supports your analysis on Microsoft® Office Excel®.



Note1; EEMUA (Engineering Equipment Materials Users' Association) Publication No. 191, 2nd Edition (2007)  
Note2; ANSI/ISA ISA18.00.02-2009 (2009)



**CAUTION**

- TOSDIC and TC-net are registered trademarks of Toshiba Corporation.
- Microsoft Excel is a registered trademark of Microsoft Corporation in the United States and other countries.
- Toshiba does not take any responsibility for incidental damage (including damage to the plant, loss of business profit, business interruption, loss of business information, and other pecuniary damage) arising out of the use or disability to use this product..
- This product is not manufactured for systems that require such a high degree of safety as would directly endanger human life in case of failure or malfunction. Main control systems of nuclear power plants, safety protection systems in nuclear facilities or other important systems requiring safety, operation controls for mass transportation and airplanes, and medical equipment control, are examples. If you intend to use the product for such systems, please consult with our department shown below in advance.
- Please be sure to read and comply with instruction manuals before using the products herein.
- The products herein must not be used for the systems which are prohibited to be produced and sold under any law and regulations.
- The products herein are subject to Foreign Exchange and Foreign Trade Laws.
- The products herein are subject to export control regulations of the U.S. authorities. Export and re-export may require approval of U.S. authorities.
- The information contained herein is presented only as a guide for the applications of the products. No responsibility is assumed by TOSHIBA for any infringements of patents or other rights of the third parties which may result from its use. No license is granted by implication or otherwise under any patent or patent rights of TOSHIBA or others

### ●Contact Information

**TOSHIBA CORPORATION**

Social Infrastructure Systems Company  
Security & Automation Systems Division  
TEL: +81-44-331-1694 FAX: +81-44-548-9553  
72-34, Horikawa-cho, Saiwai-ku, Kawasaki 212-8585, Japan

- Specifications or designs described in this catalog are subject to change without prior notice due to design change or other reasons.
- The contents in this catalog is as of January 2014.
- The name of the products described in this catalog may be used as a trademark by each company.